

Finesse West Tours

presents

Our 3rd Montana “Just Relax” Week

at

Flathead Lake Lodge

near

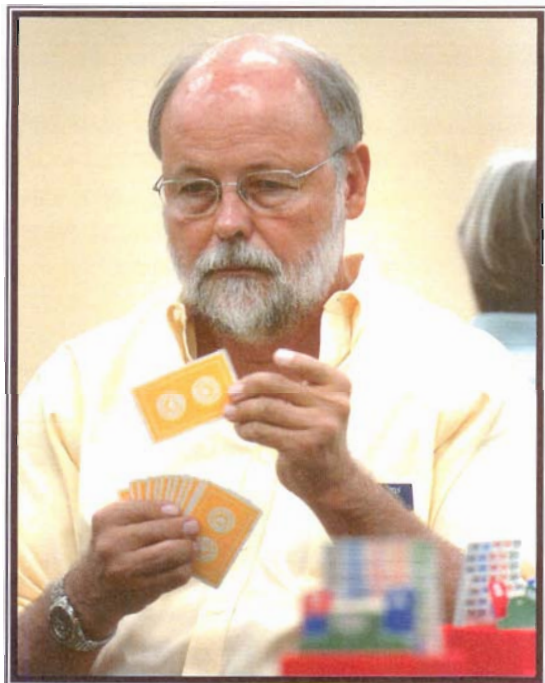
Glacier National Park

ACBL SANCTIONED



September 14 to 21, 2015

7 Nights / 8 Days



JERRY HELMS

Jerry Helms is a nationally-known tournament bridge player, lecturer & writer, whose dynamic teaching style makes him a guru of bridge lecturing. When the ACBL established its teacher accreditation program (TAP) in 1987, Jerry was asked to be the trainer. During his long tenure, he has certified over 2,000 bridge teachers. Since 1994 he has served annually as an expert panelist for the American Bridge Teachers Association. Mr. Helms is published monthly in his ACBL Bulletin Magazine column, "Ask Jerry."

As a talented player, Jerry has placed on the ACBL "Top 500" list for 28 consecutive years! His 20,000+ masterpoints include over 300 regional wins and nine top-five finishes in National Events.

But make no mistake, Jerry is a teacher first & foremost. His seminars are personally designed & presented with a mix of humor and a relaxed, easy-to-understand style. His unique, hands-on method combines interactive lectures with the play of pre-duplicated lesson hands. Seminar participants are provided with prepared "take home" booklets. We are thrilled to have Mr. Helms with us for five days in Montana

Finesse West Tours, Inc.

101 East Redlands Blvd. Suite 218

Redlands, CA 92373

USA

Email: info@finessewest.com

(800) 548-8062

NEED A ROOMMATE?

FINESSE WEST TOURS recognizes that finding a roommate can be a problem. Many single travelers would prefer sharing a room to avoid the expense of single supplement. **FINESSE WEST TOURS** has a unique "Roommate Program." It gives you the opportunity to select your own roommate.

Call us: (800) 548-8062

TERMS AND CONDITIONS

DEPOSIT: A refundable deposit of \$200 per person will secure your reservation. Don't wait. Space is limited.

FINAL PAYMENT: Due on or before July 14, 2015.

CANCELLATION: All initial deposits of \$200 are totally refundable through May 14, 2015. In cases where cancellation occurs between May 15, 2015 & June 13, 2015, a \$50 cancellation fee will be charged per person. In cases where cancellation occurs between June 14, 2015 & July 13, 2015, a \$200 cancellation fee will be charged per person. In cases where cancellation occurs between July 14, 2015 & August 13, 2015, 25% of the total package price per person will be charged. In cases where cancellation occurs between August 14, 2015 & September 13, 2015, 50% of the total package price per person will be charged. If cancellation or trip interruption occurs on or after September 14, 2015, the total package price is non-refundable.

INSURANCE: We recommend you purchase a travel insurance program. **FINESSE WEST TOURS, INC.** is an authorized agent for TRAVEL GUARD-International which offers coverage for trip cancellation, baggage loss, medical expenses, and personal accident.

RESPONSIBILITY: Arrangements for this tour have been made by **FINESSE WEST TOURS, INC.** acting as agents for all tour members in carefully selected, accredited, and insured accommodations, and transportation companies. The tour participant agrees that neither **FINESSE WEST TOURS, INC.** nor their affiliates, shall be liable for any damage, loss (including personal injury, death, or property loss), or expense occasioned by any act or omission of any supplier providing tour services or any other person. If **FINESSE WEST TOURS, INC.** cancels a tour, it shall bear none of the responsibility beyond refunding monies paid.

NOT INCLUDED IN YOUR TRAVEL PACKAGE: Airfare, excess baggage, and items of a personal nature such as bar services, laundry, and phone. All participants will have charging privileges for personal items while at Flathead Lake Lodge.

Flathead Lake Lodge



One of twelve cabins



South Lodge at sunset



Red 'Jammer' Bus heading for Logan Pass in Glacier N.P.



Dining Room—Main Lodge

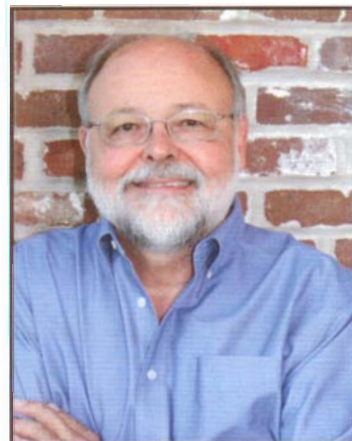


Nor'Easter Racing Sloop and the Teak Wood Cruiser



FRED THEURKAUF

Our 3rd
"Just Relax" Week
Flathead Lake Lodge
Montana
 Sept.14 to 21, 2015



JERRY HELMS

Join Fred Theurkauf, bridge superstar Jerry Helms, plus alumni and friends in pine, fir, and aspen forests just south of **Glacier National Park** at elegant and rustic **Flathead Lake Lodge**. This meticulously kept ranch - resort - conference center is one of the best kept secrets in Montana's Big Sky country. Often the retreat of U.S. State Department distinguished visitors and military dignitaries from around the world, the **Flathead Lake Lodge** management has found an ideal date for our 2015 "Just Relax" Week. With its unique location, nestled in a secluded bay on the shores of Flathead Lake, the Lodge combines a western atmosphere with the elegance of a manicured mountain retreat at a mere 3000 feet. You'll wake to pristine fresh air and a short walk to breakfast and retire to brilliant star-studded skies. Whether you're sitting near the giant fireplace in the Main Lodge, or chatting with friends over a cocktail in the Lodge's Saloon reserved just for us, **Flathead Lake Lodge** is the perfect setting for our "Just Relax" Week. With great dining, cocktails lakeside, bridge activities galore, you are sure to enjoy Finesse West Tours' 3rd "Just Relax" Week here in Montana. So don't wait, don't hesitate. Call us today.

EIGHT DAY PACKAGE INCLUDES:

- ♦ **Seven nights / eight days stay at rustic & cozy Flathead Lake Lodge**
- ♦ **All inclusive dining daily (B,L,D) prepared by Flathead's experienced chefs**
- ♦ **Bridge lectures & humor by superstar bridge expert & lecturer Jerry Helms of ACBL's "Ask Jerry" fame**
- ♦ **Seven sessions of Stratified ACBL duplicate bridge (5 Events) followed by Q & A Hand Analysis with Jerry, Fred & other guest experts**
- ♦ **Optional day trip to Glacier National Park by classic 1930's 16-passenger Red Jammer Buses guided by retired Glacier Park rangers including lunch at Lake McDonald Lodge**
- ♦ **Flathead Lake cruise on the Classic Teak-Wood Cruiser or the 1928 "Nor'Easter" Q-12 Racing Sloop**
- ♦ **Campfire steak-fry and sing along – with all the Lodge Riders**
- ♦ **"Casual" Gala Farewell Cocktails & Awards Dinner including thousands of dollars in Finesse West Tours' door prizes**

Trout fishing in the Pond (we have the equipment) • Tennis (we have the courts, balls & racquets) • Horseback riding (we have the horses – saddles and bridles) • All Included!

THE PRICE OF THE ENTIRE TRIP is based on the accommodation configuration you choose. Prices below include all accommodations, all meals, all gratuities, all bridge activities including bridge lectures by Jerry Helms, airport & baggage transfers from Kalispell (FCA) Airport, sailing or cruising on Flathead Lake, steak-fry cook-out & sing-along, and our Finesse West Tours "Very Casual" Gala Farewell Cocktails and Awards Dinner – plus the use of equipment for great trout fishing, use of tennis courts and horseback riding.

ACCOMMODATION SELECTION: Flathead Lake Lodge is laid out in a breathtaking setting facing the lake. Guest accommodations are available in four lodges and twelve cabins: **Main Lodge, South Lodge, Cedar Lodge, Hillside Lodge** and 12 individual **cabins**. Sharing with several friends will reduce your price, as accommodations for three and four Finesse West guests are configured with two bedrooms and one bath – some with living rooms. Even some accommodations for two Finesse West guests have two bedrooms. This space is limited – call early. Deposits refundable till May 2015.

Flathead Lake Lodge Accommodations

SELECT EITHER A LODGE GUESTROOM OR A CABIN:

1 BEDROOM, 1 BATH

Twin share per person	\$2763.00
Single per person	\$3234.00

2 BEDROOMS, 1 BATH

Twin share per person	\$2968.00
Triple share per person	\$2692.00
Quad share per person	\$2431.00

2 BEDROOMS, 1 BATH, LIVING ROOM

Twin share per person	\$3132.00
Triple share per person	\$2860.00
Quad share per person	\$2619.00

Finesse West Tours, Inc.

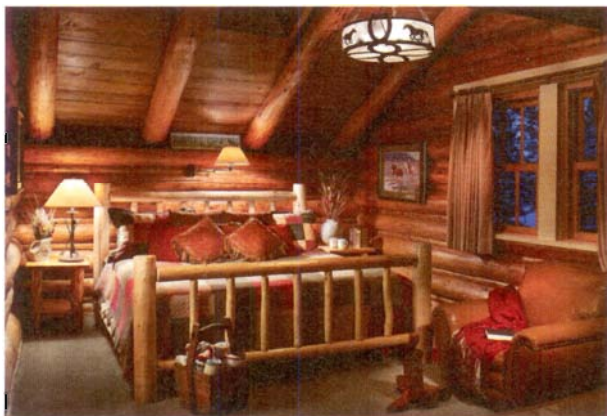
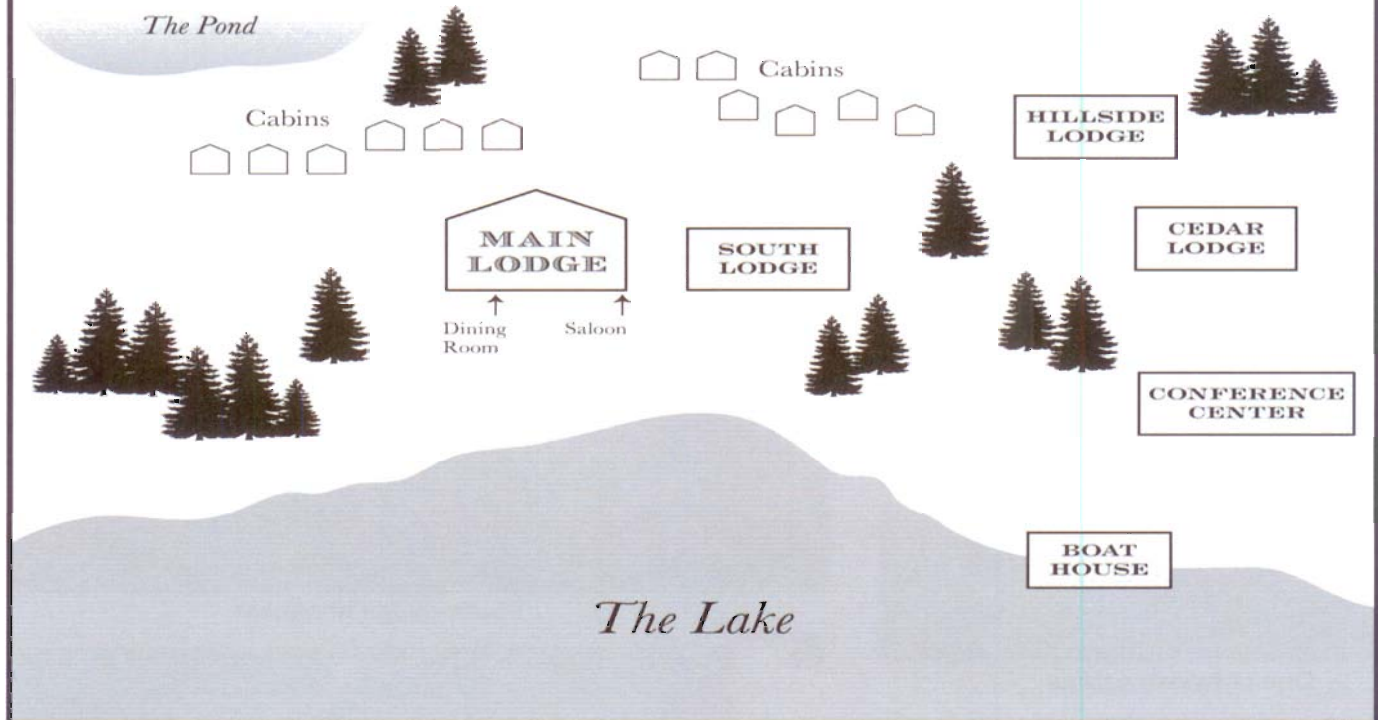
**101 East Redlands Blvd. Suite 218
Redlands, CA 92373
USA**

www.finessewest.com

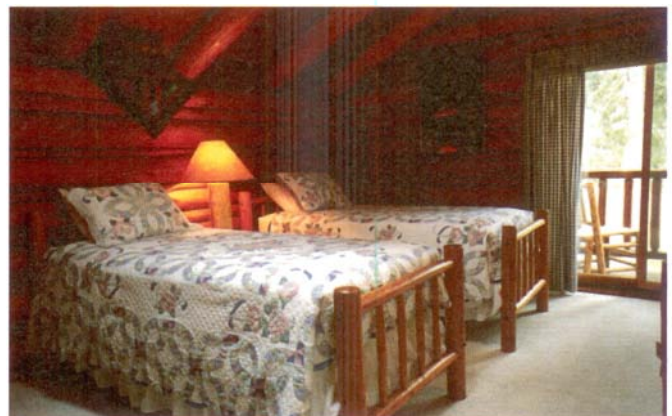
Email: info@finessewest.com

(800) 548-8062

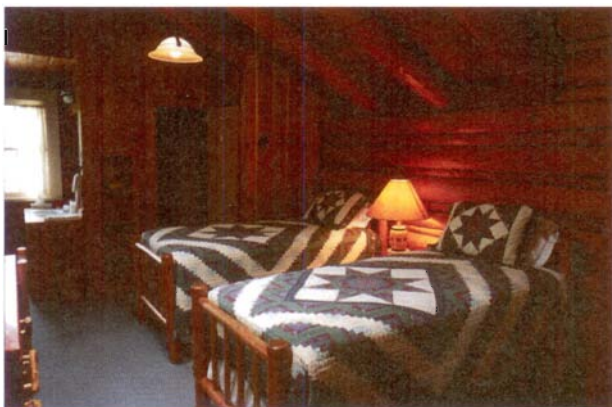
Flathead Lake Lodge-Property Layout



Main Lodge guestroom



South Lodge guestroom



Cedar Lodge guestroom



Cabin living room