

JERRY HELMS

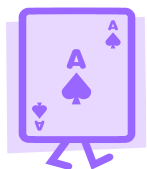
BRIDGE FESTIVAL

On St. Simons in the Spring!

"A Comprehensive Look at
Bidding, Declarer Play, & Defense"

Wednesday, April 25, and
Thursday, April 26, 2018

10:00 a.m. to 3:30 p.m.



Marsh's Edge
Retirement Community,
St. Simons Island, Georgia

A registration fee of \$220 (\$240 after after March 10)
includes four sessions of bridge instruction by Jerry
Helms, "Ask Jerry" Q&A time, a booklet written by Jerry,
two buffet lunches and a wine & cheese party.



For more information, contact:
Ken Trobaugh, 912-638-2142
ktrobaugh@comcast.net

SPECIAL TUESDAY NOVICE/REFRESHER SEMINAR

Jerry is offering this helpful morning seminar on April 24th at
the nearby Golden Isles Duplicate Bridge Club. For information,
contact Teryl McBurney, mcteryl@yahoo.com or 912-268-4388.

www.jerryhelms.com

www.marshs-edge.com

JERRY HELMS

BRIDGE FESTIVAL

On St. Simons in the Spring!

"A Comprehensive Look at
Bidding, Declarer Play, & Defense"

Wednesday, April 25, and
Thursday, April 26, 2018

10:00 a.m. to 3:30 p.m.



Marsh's Edge
Retirement Community,
St. Simons Island, Georgia

A registration fee of \$220 (\$240 after after March 10)
includes four sessions of bridge instruction by Jerry
Helms, "Ask Jerry" Q&A time, a booklet written by Jerry,
two buffet lunches and a wine & cheese party.



For more information, contact:
Ken Trobaugh, 912-638-2142
ktrobaugh@comcast.net

SPECIAL TUESDAY NOVICE/REFRESHER SEMINAR

Jerry is offering this helpful morning seminar on April 24th at
the nearby Golden Isles Duplicate Bridge Club. For information,
contact Teryl McBurney, mcteryl@yahoo.com or 912-268-4388.

www.jerryhelms.com

www.marshs-edge.com